



C12/6.5 HB

TRUCKED AERIAL WORK PLATFORM

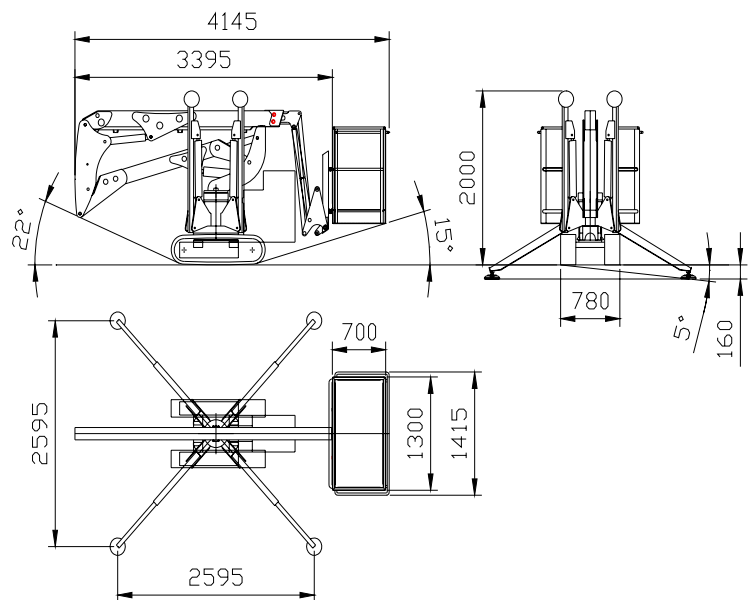
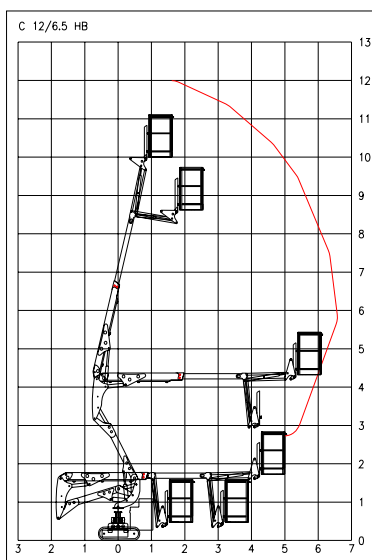
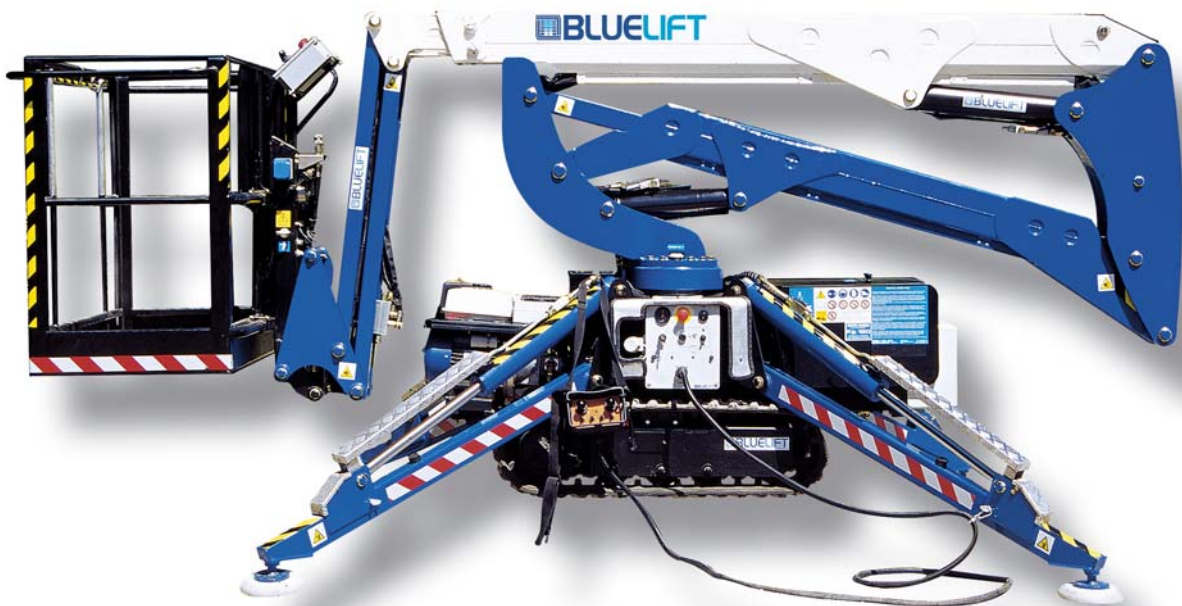
NECELLE ÉLÉVATRICE CHENILLÉE

RAUPEN-ARBEITSBÜHNE

PIATTAFORMA DI CINGHIA PER IL LAVORO IN ALTEZZA

BLUELIFT

PIATTAFORMA AEREA CINGHIA



SPECIFICATIONS C12/6.5HB

• PLATFORM	removable, aluminium, dim. 1300x 700 xh1100
• PLATFORM LEVELLING	hydraulic with closed circuit
• BOOM	2 section telescopic all steel
• BOOM ANGLE	0°/ +75°
• PANTOGRAPH	double boom , all steel
• PANTOGRAPH ANGLE	-15° /+ 60°
• SLEWING TURRET	340° not continuous
• CONTROLS	proportional controls
• OIL TANK CAPACITY	30L
• DOUBLE PUMP	4L+4L
• CIRCUIT PRESSURE	180bar
• MAXIMUM GRADIENT	28%
• MAX WIND SPEED	12,5 m/sec
• ELECTRIC SYSTEM VOLTAGE	12V
• MAX MANUAL FORCE	40 daN
• CONTROL SPEED	0,4 m/sec
• LOAD CAPACITY	200 kg
• NO. OPERATORS	2
• MAX WORKING HEIGHT	12m
• MAX WORKING OUTREACH	6,5m
• MACHINE WEIGHT	1920kg
• TRACTION	tracked
• MAX TRASLATION SPEED	1,5km/h
• ENGINE	single-cylinder noiseless Honda
• OUTRIGGERS	collapsible , hydraulic descent

STANDARD SAFETY EQUIPMENTS

Priority of platform controls

Locks for the safety belts on the platform

Emergency push-button with engine stop

Hand pump for the emergency descent of the platform

Automatic opening of the brake when the rotation begins

Aerial structure locking till the stabilisation is complete

A Protection with pressure relief valve on the hydraulic system

Overcentre lock valves on all the cylinders

Translation intermittent sound alarm

Automatic opening of the brake when traslation begins

Complete stabilisation warning lights

Hour-meter

Electro-hydraulic trasmission

On-Plarform load limiting device

220 V Supply with plug on the platform with earth leakage circuit breaker

Electric-pump 3,8l – 220 V

Gearcase protection cap

Produced according to EN 280 norm and international safety regulations

Use and maintenance handbook

BLUeLIFT

BLUELIFT S.r.l.
Strada Provinciale n.18 "Conca", snc
Località Santa Maria del Piano
47854 Montescudo (RN) – ITALY
Tel. +39 0541 756872
Fax +39 0541 729800
www.bluelift.it
email: info@bluelift.it