



BLUELIFT

PIATTAFORME AEREE

C14/6.5
200kg



TRUCKED AERIAL WORK PLATFORM

NECELLE ÉLÉVATRICE CHENILLÉE

RAUPEN-ARBEITSBÜHNE

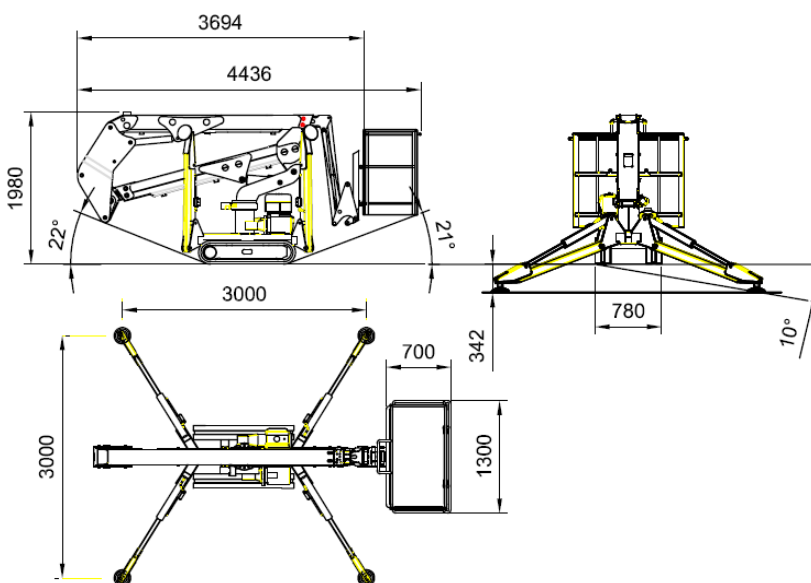
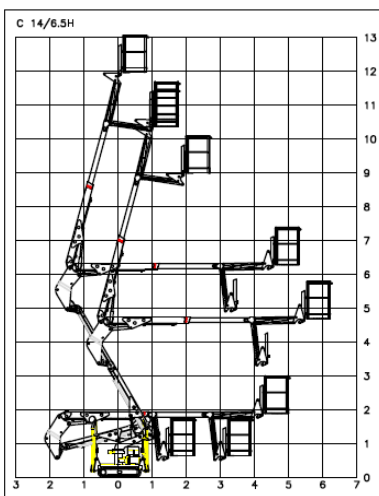
PLATAFORMA DE ORUGA PARA LO TRABAJO EN ALTURA

PIATTAFORMA AEREA CINGOLATA
BLUEAIRIA

*Ringeriksveien
516
N-3538
Sollihøgda*

*Tel.
0047 47 858500
Fax.
0047 67 138176*

Website
www.ajmaskin.no



*Ringeriksveien
516
N-3538
Sollihøgda*

*Tel.
0047 47 858500
Fax.
0047 67 138176*

Website
www.ajmaskin.no

SPECIFICATIONS C14/6.5H

PLATFORM	removable, aluminium, dim.1300x700xh1100
PLATFORM LEVELLING	hydraulic with closed circuit
BOOM	2 section telescopic, all steel
BOOM ANGLE	0°/ +75°
PANTOGRAPH	2 section telescopic, all steel
PANTOGRAPH ANGLE	-15° /+ 60°
SLEWING TURRET	>320° not continuous
CONTROLS	proportional controls
OIL TANK CAPACITY	30L
DOUBLE PUMP	4L+4L
CIRCUIT PRESSURE	180bar
MAXIMUM GRADIENT	28%
MAX WIND SPEED	12,5 m/sec
ELECTRIC SYSTEM VOLTAGE	12V
MAX MANUAL FORCE	20 daN
CONTROL SPEED	0,4 m/sec
LOAD CAPACITY	120 kg
NO. OPERATORS	1
MAX WORKING HEIGHT	14m
MAX WORKING OUTREACH	6,5m
MACHINE WEIGHT	1630kg
TRACTION	tracked
MAX TRASLATION SPEED	1,5km/h
ENGINE	single-cylinder noiseless Honda
OUTRIGGERS	collapsible , hydraulic descent

STANDARD SAFETY EQUIPMENTS

Priority of platform controls
Locks for the safety belts on the platform
Emergency push-button with engine stop
Hand pump for the emergency descent of the platform
Automatic opening of the brake when the rotation begins
Aerial structure locking till the stabilization is complete
A Protection with pressure relief valve on the hydraulic system
Overcentre lock valves on all the cylinders
Translation intermittent sound alarm
Automatic opening of the brake when translation begins
Complete stabilisation warning lights
Hour-meter
Electro-hydraulic transmission
On-Platform load limiting device
220 V Supply with plug on the platform with earth leakage circuit breaker
Electric-pump 3,8l – 220 V
Gearcase protection cap
Produced according to EN 280 norm and international safety regulations
Use and maintenance handbook