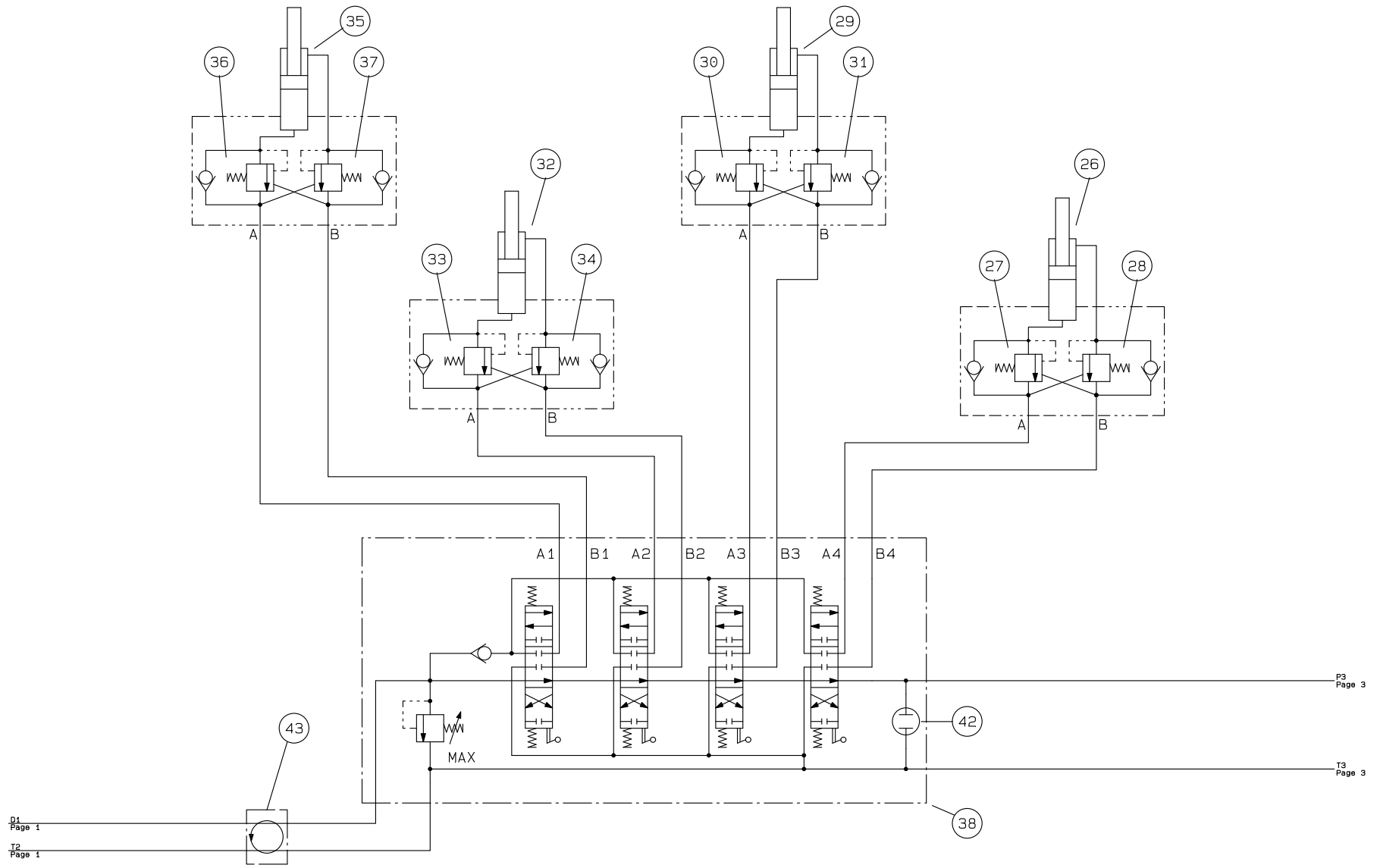


<b>DENKA LIFT</b> Højvang 5 4300 Holbæk Tele : + 45 59 45 55 00 Fax : + 45 59 45 55 02 E-mail : Technical @ denka . dk	Lift type: DK8JR12	Lift No: 12996	Hydraulic: HG303/2	Rev: 28-08-06
	Extra equipment: HYD.OUTRIGGER - SELF DRIVE			
Date:	Drawn by: CTJ	Approved by: CTJ	Page: 1 of 7	



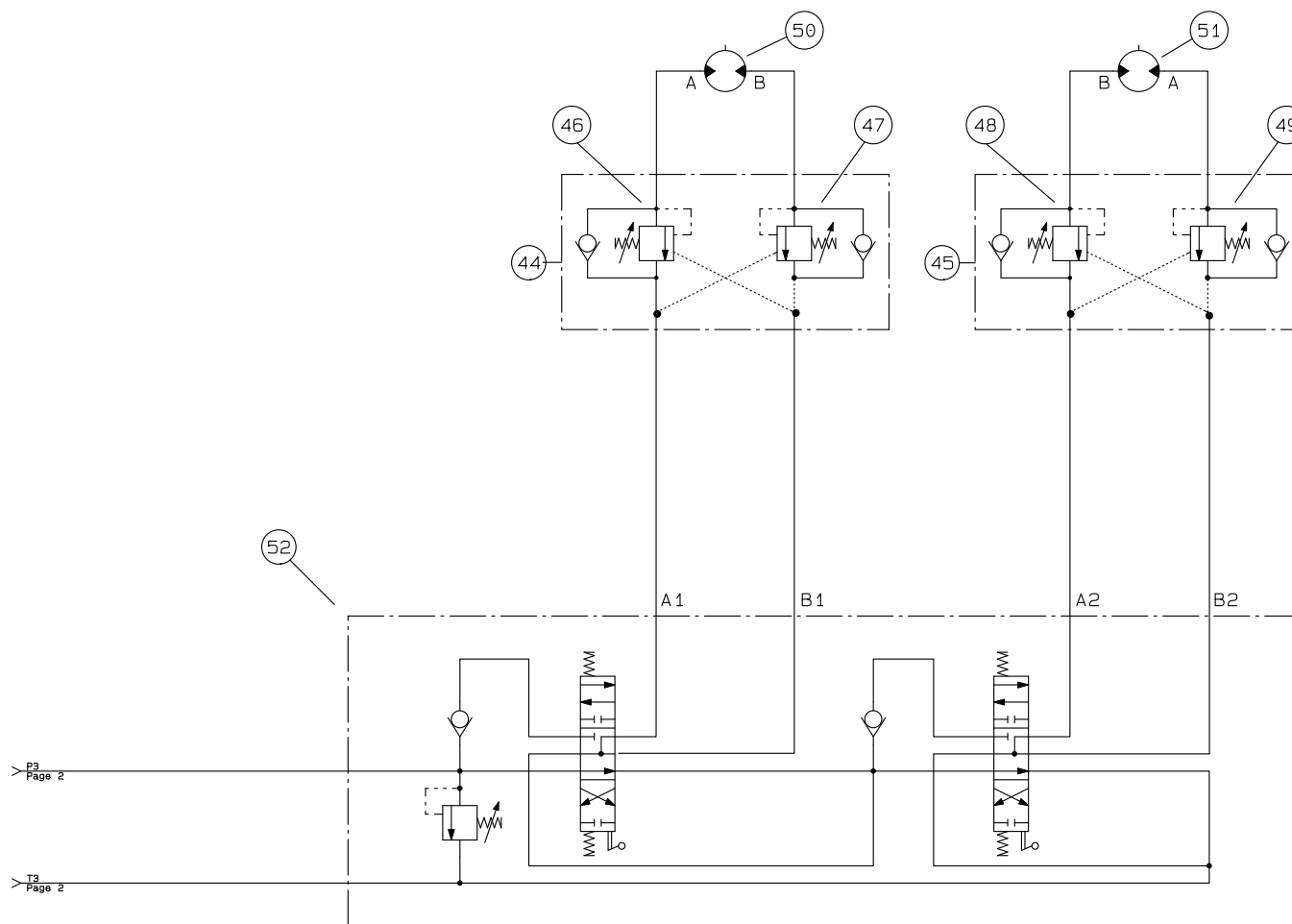
**DENKA LIFT**  
 Højvang 5 4300 Holbæk  
 Tele : + 45 59 45 55 00  
 Fax : + 45 59 45 55 02  
 E-mail : Technical @ denka. dk

Lift type: DK8JR12  
 Extra equipment: HYD.OUTRIGGER - SELF DRIVE  
 Date:

Lift No: 12996  
 Drawn by: CTJ

Hydraulic: HG303/2  
 Approved by: CTJ

Rev: 28-08-06  
 Page: 2 of 7



## Stykliste

## Partlist

## Stückliste

Pos.	Benevnelse Designation Benennung	Vare nr. Article. Teil nr.
1	El-motor, ABB MT 906 L24 FT130 2HK Motor, ABB MT906 L24 FT130 El-motor, ABB MT906 L24 FT130	03300030
2	Pumpe, P1 A1D-6R0 Pumpe, P1 A1D-6R0 Pumpe, P1 A1D-6R0	03290020
3	Pumpe, P2 P0,5D-1,30 Pumpe, P2 P0,5D-1,30 Pumpe, P2 P0,5D-1,30	03290021
4	Returfilter, FIO-20/1 kpl. Return filter, compl. FIO-20/1 R=cklauffilter, kpl. FIO-20/1	03270005
5	Filterelement, CR30/1 Filter insert, CR30/1 Filtereinsatz, CR30/1	03270006
6	Sugefilter, 1319 Suction strainer, 1319 Saugsieb, 1319	03270007
7	Påfyldningsfilter, TCO 301 Filler screen, TCO 301 F=llungsfilter, TCO 301	03270009
8	Skueglas, 3/8" Sight glass, 3/8 Schauglass, 3/8	03270016
9	Magnetventil, DHI-0710-X 24DC Solenoid valve, DHI-0710 Magnetventil, DHI-0710	03240020
10	Mængdereguleringsventil, IFC14-1,6 Flow control valve, IFC14-1,6 Mengeregel.ventil, IFC14-1,6	03230010
11	Ventilblok, HG303 Valve block, HG303 Ventilblock, HG303	03220015
12	Overtryksventil, VLP35S-N Pressure control valve, VLP35S-N Druckregelventil, VLP35S-N	03250037
13	Magnetventil, DHI-0715-X24DC Soleniod valve, DHI-0715-X24DC Magnetventil, DHI-0715-X24DC	03240037
14	Magnetventil, DHI-07193-X 24DC Solenoid valve, DHI-07193 Magnetventil, DHI-07193	03240019
15	Magnetventil, DHI-0713-X24DC Solen. valve, DHI-0713-X24DC Magnetventil, DHI-0713-X24DC	03240011
16	Magnetventil, DHI-0713-X24DC Solen. valve, DHI-0713-X24DC Magnetventil, DHI-0713-X24DC	03240011
<b>DENKA LIFT A/S</b> Højvang 5, 4300 HØLBEK Tel. +45 59 45 55 00 Fax +45 59 45 55 02 WWW.DENKA.DK		Lift type: DK8JR12 Lift no: 12996 Extra equipment : HYD.OUTRIGGER - SELF DRIVE Date : Side: 4 af 7

## Stykliste

## Partlist

## Stückliste

Pos.	Benevnelse Designation Benennung	Vare nr. Article. Teil nr.
17	Overtryksventil, VLP35S-B Relief valve, VLP35S-B Druckbegr.vent. VLP35S-B	03250021
18	Overtryksventil, VLP35S-N Pressure control valve, VLP35S-N Druckregelventil, VLP35S-N	03250037
19	Tipcylinder DK8JR12 Tiltcylinder DK8JR12 Hubzylinder DK8JR12	40155211
20	Overcenterventil, CBCH-LCN Over-centre valve, CBCH-LCN Senkbremsventil, CBCH-LCN	03250024
21	Hydraulikmotor, OMM 32 Orbit motor, OMM 32 Hydraulikmotor, OMM 32	03350009
22	Bomcylinder DK8JR12 Boomcylinder DK8JR12 AuslegerZylinder DK8JR12	40155811
23	Overcenterventil, CACA-LHN Over-centre valve, CACA-LHN Senkbremsventil, CACA-LHN	03250025
24	Horisonteringscylinder, DK8JR10 40/20-426 Lev. cylinder, DK8JR10 40/20-426 Ausgl. zylinder, DK8JR10 40/20-426	40067211
25	Overcenterventil, CBCA-LAN Over-centre valve, CBCA-LAN Senkbremsventil, CBCA-LAN	03250022
26	Bencylender DK8jr10 Legcylinder DK8jr10 Beinzylinder DK8jr10	10148111
27	Overcenter Fast CBCH-LCN PMC Over-centre valve CBCH-LCN Senkbremsventil CBCH-LCN	03250000
28	Overcenter Fast CBCH-LCN PMC Over-centre valve CBCH-LCN Senkbremsventil CBCH-LCN	03250000
29	Bencylender DK8jr10 Legcylinder DK8jr10 Beinzylinder DK8jr10	10148111
30	Overcenter Fast CBCH-LCN PMC Over-centre valve CBCH-LCN Senkbremsventil CBCH-LCN	03250000
31	Overcenter Fast CBCH-LCN PMC Over-centre valve CBCH-LCN Senkbremsventil CBCH-LCN	03250000
32	Bencylender DK8jr10 Legcylinder DK8jr10 Beinzylinder DK8jr10	10148111

**DENKA LIFT A/S**  
Højvang 5, 4300 HØLBEK  
Tel. +45 59 45 55 00  
Fax +45 59 45 55 02  
WWW.DENKA.DK

Lift type:DK8JR12

Lift no:12996

Extra equipment :HYD.OUTRIGGER - SELF DRIVE

Date :

Side: 5 af 7

## Stykliste

## Partlist

## Stückliste

Pos.	Benevnelse Designation Benennung	Vare nr. Article. Teil nr.
33	Overcenter Fast CBCH-LCN PMC Over-centre valve CBCH-LCN Senkbremsventil CBCH-LCN	03250000
34	Overcenter Fast CBCH-LCN PMC Over-centre valve CBCH-LCN Senkbremsventil CBCH-LCN	03250000
35	Bencylender DK8jr10 Legcylinder DK8jr10 Beinzcylinder DK8jr10	10148111
36	Overcenter Fast CBCH-LCN PMC Over-centre valve CBCH-LCN Senkbremsventil CBCH-LCN	03250000
37	Overcenter Fast CBCH-LCN PMC Over-centre valve CBCH-LCN Senkbremsventil CBCH-LCN	03250000
38	Manøvreventil, SD5/4-P Manoeuvering valve, SD5/4-P Manπverventil, SD5/4-P	40095410
39	Magnetventil, GS02-01-00N u/spole Solenoid valve, GS02-01-00N excl. coil Magnetventil, GS02-01-00N ohne spule	03240004
40	Spole, CCS0 24D Coil, CCS0 24D Spule, CCS0 24D	03240005
41	Manometer, G 63-160 Oil gauge, G 63-160 Manometer, G 63-160	03270019
42	Carry over Carry over Carry over	10063610
43	Hydraulisk drejeled Hydraulic joint Hydraulischer drehglied	03460103
44	VENTILBLOK STERLING LB1-0312A VALVE BLOCK STERLING LB1-0312A VENTILBLOCK STERLING LB1-0312A	03220063
45	VENTILBLOK STERLING LB1-0312A VALVE BLOCK STERLING LB1-0312A VENTILBLOCK STERLING LB1-0312A	03220063
46	Vekselventil, WVS 12 L Shuttle valve, WVS 12 L Wechselventil, WVS 12 L	03250065
47	Vekselventil, WVS 12 L Shuttle valve, WVS 12 L Wechselventil, WVS 12 L	03250065
48	Vekselventil, WVS 12 L Shuttle valve, WVS 12 L Wechselventil, WVS 12 L	03250065
<b>DENKA LIFT A/S</b> Højvang 5, 4300 HØLBÆK Tel. +45 59 45 55 00 Fax +45 59 45 55 02 WWW.DENKA.DK		Lift type:DK8JR12 Lift no:12996 Extra equipment :HYD.OUTRIGGER - SELF DRIVE Date : Side: 6 af 7

