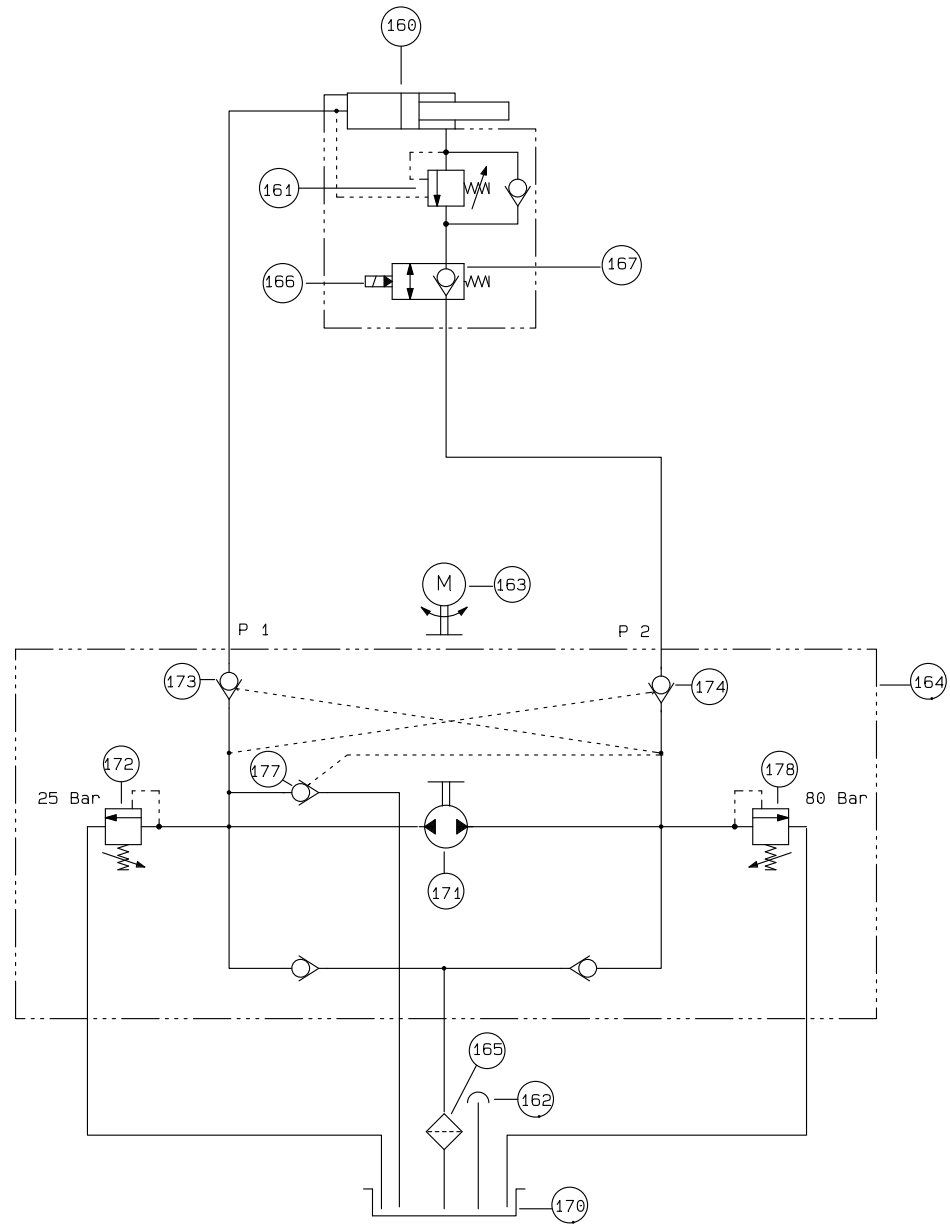


<p>DENKA LIFT Højvang 5 4300 Holbæk Tele : + 45 59 45 55 00 Fax : + 45 59 45 55 02 E-mail : Technical @ denka. dk</p>	<p>Lift type: DK7 MK22 - DL 18 Extra equipment: Selvkøring - Selvdrive - Selbstfahrantrieb Date: 24-08-04</p>	<p>Lift No: 12557 Drawn by: JS</p>	<p>Hydraulic: HG410/4 prop Approved by: JS</p>	<p>Rev: 07-10-02 Page: 2 of 9</p>
--	---	---	---	--

Hydra-app MW2



DENKA LIFT
 Højvang 5 4300 Holbæk
 Tele : + 45 59 45 55 00
 Fax : + 45 59 45 55 02
 E-mail : Technical @ denka. dk

Lift type: DK7 MK22 - DL 18
 Date: 24-08-04

Lift No: 12557
 Drawn by: JS

Hydraulic: HG410/4 prop
 Approved by: JS

Rev: 07-10-02
 Page: 3 of 9

Stykliste

Partlist

Stückliste

Pos.	Benevnelse Designation Benennung	Vare nr. Article. Teil nr.
1	El.motor, 24MC 42 THWA Motor, 24MC 42 THWA El.motor, 24MC 42 THWA	03300004
2	Pumpe, P1 13MD6 Pump, P1 13MD6 Pumpe, P1 13MD6	03290001
3	Filterelement, CR30/1 Filter insert, CR30/1 Filtereinsatz, CR30/1	03270006
4	Returfilter, FIO-20/1 kpl. Return filter, compl. FIO-20/1 Rücklauffilter, kpl. FIO-20/1	03270005
5	Sugefilter, 1319 Suction strainer, 1319 Saugsieb, 1319	03270007
6	Udluftningsfilter, plast TMDF 12 Breather, plastic TMDF 12 Entlüftungsfilter, plast TMDF 12	03270022
7	Håndpumpe, IS 7 Handpump, IS 7 Handpumpe, IS 7	40602800
8	Kontraventil for pumpe s.409 Check valve for pump s.409 Rückschlagventil für pumpe s.409	10040911
9	Overtryksventil, VLP35S-N Pressure control valve, VLP35S-N Druckregelventil, VLP35S-N	03250037
10	Skueglas Sight glass Schauglass	03270015
11	Overtryksventil, VLP35S-N Pressure control valve, VLP35S-N Druckregelventil, VLP35S-N	03250037
12	Overtryksventil, VLP35S-N Pressure control valve, VLP35S-N Druckregelventil, VLP35S-N	03250037
13	Magnetventil, GS02-11-00N u/spole Soleniod valve, GS02-11-00N excl. coil Magnetventil, GS02-11-00N ohne spule	03240065
14	Spole, CCS0 24D Coil, CCS0 24D Spule, CCS0 24D	03240005
15	Trykkompensator B04B3HZN Pressure Compensator B04B3HZN Druckkompasator B04B3HZN	03220066
16	Hydraulisk drejeled 3 P Hydraulic swivel 3 P Hydraulisch drehdurchfurung 3 P	10148611
DENKA LIFT A/S Højvang 5, 4300 HOLBÆK Tel. +45 59 45 55 00 Fax. +45 59 45 55 02 e-mail: Technical @ denka. dk		Lift type:HYD DK7 MK22 - DL18 Lift no:12557 Extra equipment :Selvkøring - Selvdribe - Selbstfahrantrieb Date :24-08-04 Side: 4 af 9

Stykliste

Partlist

Stückliste

Pos.	Benevnelse Designation Benennung	Vare nr. Article. Teil nr.
17	Vekselventil, R 1/8 EWV-2,5 Shuttle valve, R 1/8 EWV-2,5 Wechselventil, R 1/8 EWV-2,5	03230070
18	Ventilindsats, RVS6-L/8-S Valve insert, RVS6-L/8-S Ventileinsatz, RVS6-L/8-S	03230001
19	Spole, CCS0 24D Coil, CCS0 24D Spule, CCS0 24D	03240005
20	Magnetventil GS02-02-10N 38 L u/spole Solenoid valve GS02-02-10N 38 L excl coil Magnetventil GS02-02-10N 38 L ohne spule	03240088
21	Vekselventil, R 1/8 EWV-2,5 Shuttle valve, R 1/8 EWV-2,5 Wechselventil, R 1/8 EWV-2,5	03230070
22	Bronzefilter, SBF5 Bronze filter, SBF5 Bronzefilter, SBF5	03230005
23	Dyse m/unbrakohoved S, ø 0,20 Nozzle whit allenmain S, ø 0,20 Düse S, ø 0,20	03230054
24	Magnetventil prop. ud/ind Atos DHZO-A-073-S3 Solenoid valve prop. out/in Atos DHZO-A-073-S3 Magnetventil prop. aus/ein Atos DHZO-A-073-S3	03240078
25	Magnetventil prop. højre/venstre Atos DHZO-A-71L1-4H Solenoid valve prop. left/right Atos DHZO-A-71L1-4H Magnetventil prop. links/recht Atos DHZO-A-71L1-4H	03240092
28	Magnetventil prop. op/ned Atos DHZO-A-071-L1/N Solenoid valve prop. up/down Atos DHZO-A-071-L1/N Magnetventil prop. auf/ab Atos DHZO-A-071-L1/N	03240076
34	Manometer, G 63-160 Oil gauge, G 63-160 Manometer, G 63-160	03270019
36	Drøvle kontraventil, R11-0,60 Throttle/Checkvalve, R11-0,60 Drossel/Rückschlagventil, R11-0,60	03250043
37	Magnetventil, GS02-25-10N u/spole Solenoid valve, GS02-25-10N excl. coil Magnetventil, GS02-25-10N ohne spule	03240080
38	Spole, CCS0 24D Coil, CCS0 24D Spule, CCS0 24D	03240005
39	Kontraventil, RZ08RL Check valve, RZ08RL Rückschlagventil, RZ08RL	03250039
40	Ventilindsats, RVS6-L/8-S Valve insert, RVS6-L/8-S Ventileinsatz, RVS6-L/8-S	03230001

DENKA LIFT A/S

Højvang 5, 4300 HOLBÆK
Tel. +45 59 45 55 00
Fax. +45 59 45 55 02
e-mail: Technical @ denka. dk

Lift type:HYD DK7 MK22 - DL18

Lift no:12557

Extra equipment :Selvkøring - Selvdribe - Selbstfahrantrieb

Date :24-08-04

Side: 5 af 9

Stykliste

Partlist

Stückliste

Pos.	Benevnelse Designation Benennung	Vare nr. Article. Teil nr.
41	Ventilindsats, RVS6-L/8-S Valve insert, RVS6-L/8-S Ventileinsatz, RVS6-L/8-S	03230001
42	Ventilindsats, RVS6-L/8-S Valve insert, RVS6-L/8-S Ventileinsatz, RVS6-L/8-S	03230001
43	Ventilindsats, RVS6-L/8-S Valve insert, RVS6-L/8-S Ventileinsatz, RVS6-L/8-S	03230001
44	VENTILBLOK STERLING LB1-0312A VALVE BLOCK STERLING LB1-0312A VENTILBLOCK STERLING LB1-0312A	03220063
44	Kontraventil, s.539 Check valve, s.539 Rückschlagventil, s.539	10053911
45	Hovedventilblok HG 410-ver.99 prop. Main valve block HG 410-ver.99prop. Hauptventilblock HG 410-ver.99 prop.	03220052
45	VENTILBLOK STERLING LB1-0312A VALVE BLOCK STERLING LB1-0312A VENTILBLOCK STERLING LB1-0312A	03220063
60	Bomcylinder MK6 70/50-3150 Boomcylinder MK6 70/50-3150 Auslegerzylinder MK6 70/50-3150	40021811
61	Overcenterventil, CBCH-LDN Over-centre valve, CBCH-LDN Senkbremsventil, CBCH-LDN	03250023
70	Hydraulikmotor, OMPA 400 Orbit motor, OMPA 400 Hydraulikmotor, OMPA 400	03350001
71	Bremsecylinder Slew brake cylinder Drehbremsezyylinder	40104311
72	Bremsecylinder Slew brake cylinder Drehbremsezyylinder	40104311
80	Tipcylinder, DK7 RBW 100/65-859 Tiltcylinder, DK7 RBW 100/65-859 Hubzylinder, DK7 RBW 100/65-859	40085611
81	Magnetventil f. tipcylinder Solenoid valve f. tiltcylinder Magnetventil f. hubzylinder	10108212
83	Magnetventil, GS02-01-10N u/spole Solenoid valve, GS02-01-10N excl. coil Magnetventil, GS02-01-10N ohne spule	03240054
84	Spole, CCSO 24D Coil, CCSO 24D Spule, CCSO 24D	03240005

DENKA LIFT A/S

Højvang 5, 4300 HOLBÆK
Tel. +45 59 45 55 00
Fax. +45 59 45 55 02
e-mail: Technical @ denka. dk

Lift type:HYD DK7 MK22 - DL18

Lift no:12557

Extra equipment :Selvkøring - Selvdribe - Selbstfahrantrieb

Date :24-08-04

Side: 6 af 9

Stykliste

Partlist

Stückliste

Pos.	Benevnelse Designation Benennung	Vare nr. Article. Teil nr.
85	Trykkompensator blok HG 490 Pressure compensator block HG 490 Druckkompensator block HG 490	03220057
101	Støttebenscylinder DK7/DL16-21 Outtriggercylinder DK7/DL16/21 Stützbeinzylinder DK7/DL16-21	40151411
102	Overcenterventil, CBCH-LCN Over-centre valve, CBCH-LCN Senkbremsventil, CBCH-LCN	03250024
103	Overcenterventil, CBCH-LCN Over-centre valve, CBCH-LCN Senkbremsventil, CBCH-LCN	03250024
106	Støttebenscylinder DK7/DL16-21 Outtriggercylinder DK7/DL16/21 Stützbeinzylinder DK7/DL16-21	40151411
107	Overcenterventil, CBCH-LCN Over-centre valve, CBCH-LCN Senkbremsventil, CBCH-LCN	03250024
108	Overcenterventil, CBCH-LCN Over-centre valve, CBCH-LCN Senkbremsventil, CBCH-LCN	03250024
111	Støttebenscylinder DK7/DL16-21 Outtriggercylinder DK7/DL16/21 Stützbeinzylinder DK7/DL16-21	40151411
112	Overcenterventil, CBCH-LCN Over-centre valve, CBCH-LCN Senkbremsventil, CBCH-LCN	03250024
113	Overcenterventil, CBCH-LCN Over-centre valve, CBCH-LCN Senkbremsventil, CBCH-LCN	03250024
116	Støttebenscylinder DK7/DL16-21 Outtriggercylinder DK7/DL16/21 Stützbeinzylinder DK7/DL16-21	40151411
117	Overcenterventil, CBCH-LCN Over-centre valve, CBCH-LCN Senkbremsventil, CBCH-LCN	03250024
118	Overcenterventil, CBCH-LCN Over-centre valve, CBCH-LCN Senkbremsventil, CBCH-LCN	03250024
120	Manøvreventil, SD5/5 Manoeuvering valve, SD5/5 Manöverventil, SD5/5	03260024
121	Carry over Carry over Carry over	10063610
130	White orbitmotor 232 CE 14 White orbitmotor 232 CE 14 White orbitmotor 232 CE 14	03350023

DENKA LIFT A/S

Højvang 5, 4300 HOLBÆK
Tel. +45 59 45 55 00
Fax. +45 59 45 55 02
e-mail: Technical @ denka. dk

Lift type:HYD DK7 MK22 - DL18

Lift no:12557

Extra equipment :Selvkøring - Selvdribe - Selbstfahrantrieb

Date :24-08-04

Side: 7 af 9

Stykliste

Partlist

Stückliste

Pos.	Benevnelse Designation Benennung	Vare nr. Article. Teil nr.
131	Drivrulle cylinder Drive pulley cylinder Antriebsrolle zylinder	40042711
136	Overcenterventil E2A020 Overcenter-valve E2A020 Senkbremsventil E2A020	03250065
137	Overcenterventil E2A020 Overcenter-valve E2A020 Senkbremsventil E2A020	03250065
138	Overcenterventil E2A020 Overcenter-valve E2A020 Senkbremsventil E2A020	03250065
139	Overcenterventil E2A020 Overcenter-valve E2A020 Senkbremsventil E2A020	03250065
140	White orbitmotor 232 CE 14 White orbitmotor 232 CE 14 White orbitmotor 232 CE 14	03350023
141	Drivrulle cylinder Drive pulley cylinder Antriebsrolle zylinder	40042711
150	Manipulatorventil, HDM 120 Manipulator valve, HDM 120 Manipulatorventil, HDM 120	40111210
155	Dobbelt låseventil 1/4 VM150 Dobbelt lockvalve 1/4 VM150 Doppel verschliessen ventil VM150	03250096
160	Horisonteringscylinder, 50/20-464 Lev. cylinder, 50/20-464 Ausgl. zylinder, 50/20-464	40146711
161	Overcenterventil, CBCA-LAN Over-centre valve, CBCA-LAN Senkbremsventil, CBCA-LAN	03250022
162	Påfyldning/udluftning MW2 Filling/breather Auffüllung/entlüftungsfilter	03270056
163	Effel 24 V 400 W motor Effel 24 V 400 W motor Effel 24 V 400 W motor	03350035
164	MW 2 flange kpl. MW 2 flange kpl. MW 2 flange kpl.	03250115
165	Sugefilter f. MW2 Suction strain f. MW2 Saugsieb f. MW2	03270050
166	Spole, CCSO 24D Coil, CCSO 24D Spule, CCSO 24D	03240005

DENKA LIFT A/S

Højvang 5, 4300 HOLBÆK
Tel. +45 59 45 55 00
Fax. +45 59 45 55 02
e-mail: Technical @ denka. dk

Lift type:HYD DK7 MK22 - DL18

Lift no:12557

Extra equipment :Selvkøring - Selvdribe - Selbstfahrantrieb

Date :24-08-04

Side: 8 af 9

